

# MAT MOTION

ITALIAN STYLE



ALL THE COLORS OF ITALY



**novacolor**<sup>TM</sup>  
I colori dell'Architettura



SENSE GREY PALE  
MM 001



MISTY GREY PALE  
MM 008



INNOCENCE PALE  
MM 015



LOVE ALTAR PALE  
MM 022



SENSE GREY ORIGINAL  
MM 002



MISTY GREY ORIGINAL  
MM 009



INNOCENT DARK  
MM 016



LOVE ALTAR PALE MEDIUM  
MM 023



SENSE GREY MEDIUM  
MM 003



MISTY GREY MID  
MM 010



FLAM PALE  
MM 017



LOVE ALTAR ORIGINAL  
MM 024



ITALIAN STONE PALE  
MM 004



TITANIA PALE  
MM 011



FLAM PALE MEDIUM  
MM 018



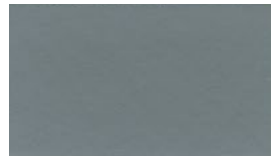
LOVE ALTAR ORIGINAL MEDIUM  
MM 025



ITALIAN STONE ORIGINAL  
MM 005



TITANIA ORIGINAL  
MM 012



FLAM ORIGINAL  
MM 019



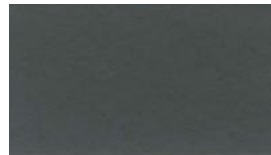
LOVE ALTAR MID  
MM 026



ITALIAN STONE MID  
MM 006



TITANIA MID  
MM 013



FLAM MID  
MM 020



LOVE ALTAR DARK  
MM 027



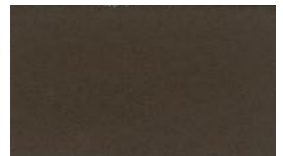
ITALIAN STONE DARK  
MM 007



TITANIA DARK  
MM 014



FLAM DARK  
MM 021



LOVE ALTAR ULTRA DARK  
MM 028



DESDEMONA PALE  
MM 029



FATE ORIGINAL  
MM 036



SPIRIT  
MM 043



JEALOUSY PALE  
MM 050



DESDEMONA ORIGINAL  
MM 030



FATE PALE  
MM 037



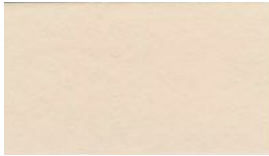
MERCUZIO PALE  
MM 044



PADUA SKIN MID  
MM 051



DESDEMONA MID  
MM 031



HERMIONE ORIGINAL  
MM 038



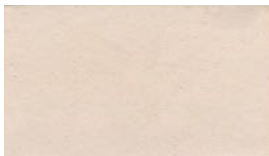
MERCUZIO PALE MEDIUM  
MM 045



PADUA PALE  
MM 052



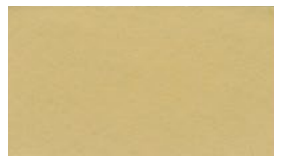
EMILIA PALE  
MM 032



HERMIONE PALE  
MM 039



MERCUZIO ORIGINAL PALE  
MM 046



PADUA SKIN PALE  
MM 053



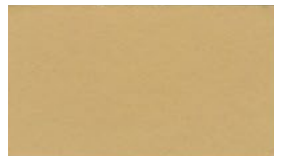
EMILIA ORIGINAL  
MM 033



HERMIONE ORIGINAL PALE  
MM 040



MERCUZIO PALE DARK  
MM 047



PADUA ORIGINAL  
MM 054



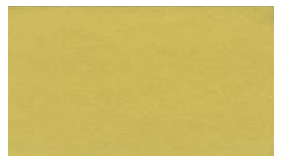
EMILIA MID  
MM 034



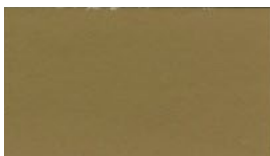
HERMIONE MID  
MM 041



MERCUZIO ORIGINAL  
MM 048



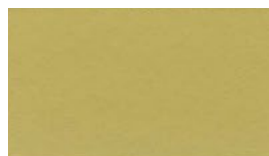
PADUA MID  
MM 055



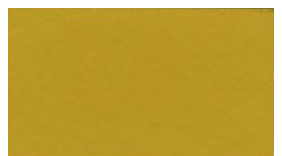
EMILIA DARK  
MM 035



HERMIONE DARK  
MM 042



MERCUZIO MID  
MM 049



PADUA DARK  
MM 056



GIULIETTA PALE  
MM 057



ARIEL SKY PALE  
MM 064



RIDDLE PALE  
MM 071



CERERE PALE  
MM 078



GIULIETTA ORIGINAL  
MM 058



ARIEL SKY ORIGINAL  
MM 065



NYMPH ORIGINAL PALE  
MM 072



CERERE ORIGINAL  
MM 079



GIULIETTA MID  
MM 059



ARIEL SKY MID  
MM 066



NYMPH PALE  
MM 073



CERERE MID  
MM 080



VERONA PALE  
MM 060



TEMPESTA BLUE PALE  
MM 067



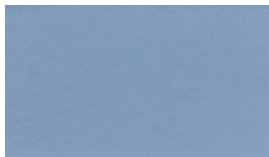
NYMPH PALE MEDIUM  
MM 074



PUCK GREEN ORIGINAL  
MM 081



VERONA ORIGINAL  
MM 061



TEMPESTA BLUE ORIGINAL  
MM 068



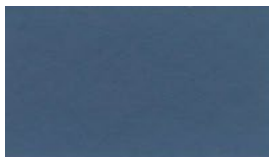
NYMPH ORIGINAL  
MM 075



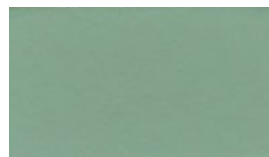
PUCK GREEN PALE  
MM 082



VERONA MID  
MM 062



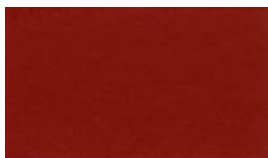
TEMPESTA BLUE MID  
MM 069



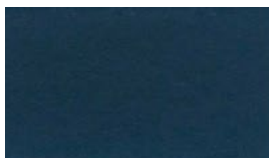
NYMPH MID  
MM 076



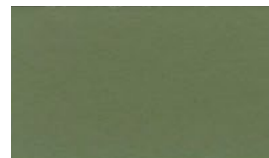
PUCK GREEN MEDIUM  
MM 083



VERONA DARK  
MM 063



TEMPESTA BLUE DARK  
MM 070



NYMPH DARK  
MM 077



PUCK GREEN DARK  
MM 084



BOHEMIA PALE  
MM 085



FOREST MID  
MM 092



WINTER WHITE PALE  
MM 099



RUSE PALE  
MM 106



BOHEMIA ORIGINAL  
MM 086



FOREST DARK  
MM 093



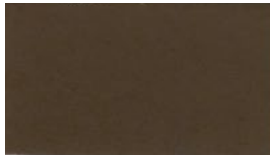
WINTER WHITE MEDIUM  
MM 100



RUSE ORIGINAL  
MM 107



SICILY YELLOW  
MM 087



OTELLO MID  
MM 094



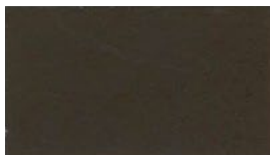
COLOSSEUM PALE  
MM 101



RUSE MID  
MM 108



OBERON PALE  
MM 088



OTELLO ORIGINAL  
MM 095



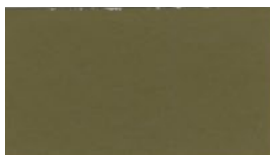
COLOSSEUM DARK  
MM 102



RUSE DARK  
MM 109



OBERON GREEN PALE  
MM 089



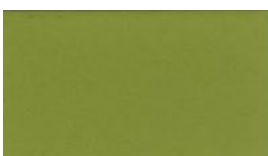
CASSIO  
MM 096



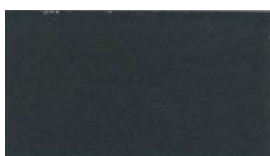
DELFI PALE  
MM 103



INGENUITY PALE  
MM 110



OBERON ORIGINAL  
MM 090



IAGO  
MM 097



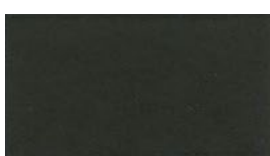
DELFI ORIGINAL  
MM 104



PORZIA PALE  
MM 111



OBERON MID  
MM 091



WIFE COKE  
MM 098



DELFI MID  
MM 105



PORZIA ORIGINAL  
MM 112

IT.  
**THE ITALIAN  
RENAISSANCE OF COLORS**

Una linea di pitture professionali per creare ambienti dove il benessere mentale e fisico acquista una valenza prioritaria.

Prodotti performanti e salubri con una ricca palette colori che stimola le passioni e le emozioni. Ogni nuance è carica di personalità e romanticismo.

EN.  
**THE ITALIAN  
RENAISSANCE OF COLORS**

A range of professional emulsions to create environments where mental and physical well-being takes priority.

High-performance and atoxic products with a rich color palette that stimulates passions and emotions. Every nuance is full of personality and romance.

FR.  
**LA RENAISSANCE  
ITALIENNE DES COULEURS**

Une gamme de peintures professionnelles pour créer des environnements où le bien-être mentale et physique sont une valeur prioritaire.

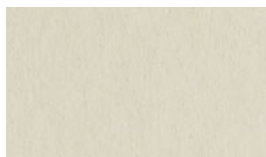
Produits performants et sains, ayant une riche palette de couleurs qui stimule passions et émotions. Chaque nuance est riche de personnalité et romantisme.

DE.  
**DIE ITALIENISCHE  
RENAISSANCE DER FARBEN**

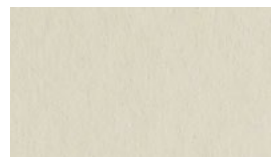
Eine Reihe professioneller Farben zur Schaffung hochwertiger Umgebungen, in denen das geistige und körperliche Wohlbefinden Vorrang hat.

Hochleistungsfähige und ungiftige Produkte mit einer reichhaltigen Farbpalette, die Leidenschaften und Emotionen weckt. Jede Nuance ist voller Persönlichkeit und Romantik.

## MATmotion Supreme



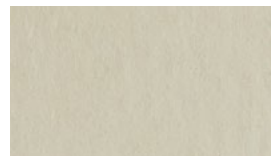
SENSE GREY ORIGINAL  
MM S. MATT 002



MISTY GREY ORIGINAL  
MM S. EGGSHELL 009

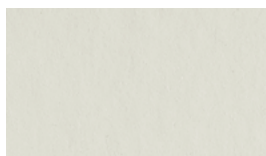


SENSE GREY MEDIUM  
MM S. MATT 003

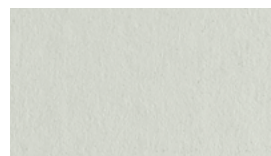


MISTY GREY MID  
MM S. EGGSHELL 010

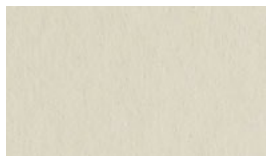
## MATmotion Extra



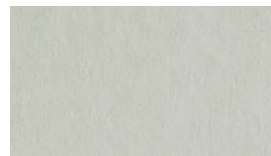
ITALIAN STONE PALE  
MM E. MATT 004



TITANIA PALE  
MM E. EGGSHELL 011

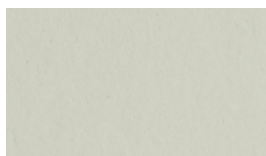


ITALIAN STONE ORIGINAL  
MM E. MATT 005

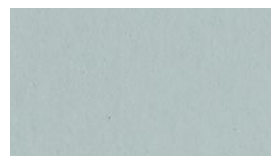


TITANIA ORIGINAL  
MM E. EGGSHELL 012

## MATmotion Urban

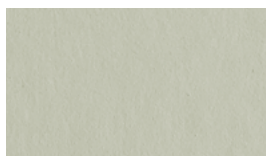


ITALIAN STONE MID  
MM U. MATT 006

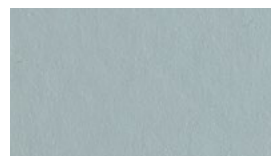


TITANIA MID  
MM U. MATT 013

## MATmotion Egggy



ITALIAN STONE DARK  
MM EGGY 007



TITANIA DARK  
MM EGGY 014



## MATmotion Urban

**IT.** Pittura all'acqua opaca per interni, inodore, a bassa emissione di VOC. Buona opacità, elevata copertura, garantisce una finitura opaca e uniforme. Ideale per pareti e soffitti di grandi superfici. Finitura: ultra opaca.

**EN.** Water-based matt paint for interiors, low-VOC and odorless. Good opacity, high coverage. It guarantees to achieve matt and uniform appearance. Ideal for the treatment of walls and ceilings and wide surfaces. Texture: ultra-matt.

**FR.** Peinture à l'eau mate pour intérieurs, inodore, à basse émission de COV. Avec bonne opacité, élevé pouvoir couvrant, MATmotion Urban garantit une finition mate et uniforme. Idéal pour murs et plafonds de grandes dimensions. Finition: ultra mate.

**DE.** Geruchsneutrale Farbe auf Wasserbasis für Innenräume, niedrige VOC-Emission. Gute Deckkraft und Abdeckung, garantiert ein mattes und gleichmäßiges Finish. Ideal für Wände und Decken für große Flächen. Finish: ultra matt.



### Applicazione / Application / Application / Anwendung

**IT.** 2 mani con pennello, rullo o pistola a spruzzo airless.  
**EN.** 2 layers with brush, wool or microfiber roller, airless spraying gun.  
**FR.** En 2 couches avec pinceau, rouleau ou pistolet à spray.  
**DE.** 2 Schichten mit Bürste, Walze oder Airless-Spritzpistole.



### Diluizione con acqua / Dilution with water / Dilution avec eau / Mit Wasser verdünnen

**IT.** A rullo prima e seconda mano 20%; a pennello prima mano 40%, seconda mano 30%.  
**EN.** By roller first and second coat at 20%; by brush first coat at 40%, second coat at 30%.  
**FR.** Application avec rouleau, première et seconde couche avec 20%; application avec pinceau, première couche avec 40%, seconde couche avec 30%.  
**DE.** Mit Walze: erste und zweite Schicht mit 20% Wasser verdünnen; mit Pinsel: erste Schicht 40% Wasser, zweite Schicht 30%.

### m<sup>2</sup> Resa indicativa / Indicative spreading rate / Rendement indicatif / Indikativer Verbrauch

**IT.** 8-10 m<sup>2</sup>/l per singolo strato.  
**EN.** 8-10 m<sup>2</sup>/l per coat.  
**FR.** 8-10 m<sup>2</sup>/l pour chaque couche.  
**DE.** 8-10 m<sup>2</sup>/l pro Schicht.



### Basi / Bases / Bases / Basen

**IT.** Bianco, base deep.  
**EN.** White, base deep.  
**FR.** Blanc, base deep.  
**DE.** Weiß und Deep.

## MATmotion Egg

**IT.** Smalto idrodiluibile, caratterizzato dall'aspetto opaco a guscio d'uovo. Trova la sua collocazione ideale per applicazioni su porte, infissi, modanature, cornici, battiscopa, piccoli mobili. La particolare formulazione acrilico-uretanico consente l'utilizzo del prodotto anche all'esterno. Finitura: eggshell.

**EN.** Water-based eggshell finish, ideal for doors, fixtures, moldings, frames, baseboards and furniture. The special acrylic-urethane formulation allows the use of the product also outdoor. Texture: eggshell.

**FR.** Email diluable avec eau, caractérisé par son aspect mat à coquille d'œuf. MATmotion Egg est l'idéal pour l'application sur portes, cadres, moulages, plinthes, petits meubles. La spéciale formulation acrylique-uréthane permet une utilisation du produit même en extérieur. Finitions: coquille d'œuf.

**DE.** Wasserlöslicher Lack, charakterisiert mit einem undurchsichtigen Aussehen und einer Eierschale-Finish. Ideal für Innenanwendungen auf Türen, Befestigungen, Leisten, Rahmen, Fußleisten, und kleine Möbel. Die spezielle Acryl-Urethan-Formulierung ermöglicht das Produkt auch in Außenbereich zu verwenden.



### Applicazione / Application / Application / Anwendung

**IT.** 2 mani con pennello, rullo o pistola a spruzzo airless.  
**EN.** 2 layers with brush, roller or airless spraying gun.  
**FR.** En 2 couches avec pinceau, rouleau ou pistolet à spray.  
**DE.** 2 Schichten mit Bürste, Walze oder Airless-Spritzpistole.



### Diluizione con acqua / Dilution with water / Dilution avec eau / Mit Wasser verdünnen

**IT.** A rullo e a pennello primo e secondo strato 5-10%; con airless 15%.  
**EN.** With roller and with brush, first and second layer 5-10%; with airless, 15%.  
**FR.** Application avec rouleau et pinceau, première et seconde couche avec 5-10%; application avec pistolet à spray avec 15%.  
**DE.** Rolle und Bürste erste und zweite Schicht 5-10%; mit 15% für Spritzpistole.

### m<sup>2</sup> Resa indicativa / Indicative spreading rate / Rendement indicatif / Indikativer Verbrauch

**IT.** 12-14 m<sup>2</sup>/l per strato.  
**EN.** 12-14 m<sup>2</sup>/l for each layer.  
**FR.** 12-14 m<sup>2</sup>/l pour chaque couche.  
**DE.** 12-14 m<sup>2</sup>/l pro Schicht.



### Basi / Bases / Bases / Basen

**IT.** Bianco, base deep, base accent.  
**EN.** White, base deep, base accent.  
**FR.** Blanc, base deep, base accent.  
**DE.** Weiße, tiefe Basis, Akzentbasis.






## MATmotion Supreme


**IT.** Smalto murale per interni a base di resine acriliche. Inodore, a bassa emissione di VOC, priva di formaldeide e plastificanti aggiunti. Superlavabile, antigoccia, facile da applicare, pulire e disinfettare, asciuga velocemente e garantisce un'ottima copertura.  
Finiture: ultra opaca e eggshell.

**EN.** High quality water-based emulsion for interiors, based on acrylic resins. Odorless, low-VOC, free from formaldehyde and added plasticizers. Excellent washability, anti-drop. Easy application, cleaning and disinfection. Fast drying and excellent coverage.  
Textures: ultra-matt and eggshell.


**FR.** Email mural pour intérieurs à base de résines acryliques. Inodore, à basse émission de COV, exempt de formaldéhyde et plastifiants ajoutés. Super lavable, anti goutte, de simple application, nettoyage et désinfection, MATmotion Supreme sèche rapidement et garantit un excellent pouvoir couvrant.  
Finitions: ultra mate et coquille d'œuf.

**DE.** Hochwertige Stumpfmatt Wandfinish auf Rein-Acrylat für den Einsatz im hochwertigen privaten Wohnbereich. Geruchlos, VOC-arm, frei von Formaldehyd. Super waschbar und tropfsicher, einfach zu bedienen, zu reinigen und zu desinfizieren. Das Produkt trocknet schnell und garantiert hervorragende Ergebnisse.  
Oberflächen: Stumpfmatt- und Eierschalen-Finish.

 **Applicazione / Application / Application / Anwendung**  
IT. 2 mani con pennello, rullo in microfibra o in lana, pistola a spruzzo airless.  
EN. 2 layers with brush, wool or microfiber roller, airless spraying gun.  
FR. En 2 couches, avec pinceau, rouleau en microfibre ou en laine, pistolet à spray.  
DE. 2 Schichten mit Pinsel, Mikrofaser oder Wollwalze, Airless-Spritzpistole.

 **Diluizione con acqua / Dilution with water / Dilution avec eau / Mit Wasser verdünnen**  
IT. Prima mano 10%, strati successivi 0-5%.  
EN. First coat 10%, next coats 0-5%.  
FR. Première couche avec 10%, couches suivantes avec 0-5%.  
DE. Erste Schicht 10%, zweite Schicht 0-5%.

**m<sup>2</sup> Resa indicativa / Indicative spreading rate / Rendement indicativo / Indikativer Verbrauch**  
IT. Matt 9-11 m<sup>2</sup>/l per singolo strato; Eggshell 10-12 m<sup>2</sup>/l per singolo strato.  
EN. Matt 9-11 m<sup>2</sup>/l per coat; Eggshell 10-12 m<sup>2</sup>/l per coat.  
FR. Matt 9-11 m<sup>2</sup>/l pour chaque couche; Eggshell 10-12 m<sup>2</sup>/l pour chaque couche.  
DE. Verbrauch Matt, 9-11 m<sup>2</sup>/l pro Schicht; Eggshell 10-12 m<sup>2</sup>/l pro Schicht.

 **Basi / Bases / Bases / Basen**  
IT. Bianco, base deep, base accent.  
EN. White, base deep, base accent.  
FR. Blanc, base deep, base accent.  
DE. Weiß, deep und accent.


## MATmotion Extra


**IT.** Pittura all'acqua per interni, facile da applicare, asciuga velocemente, inodore, a bassa emissione di VOC, priva di formaldeide e plastificanti aggiunti. Ottima copertura, superlavabile, garantisce una finitura uniforme.  
Finiture: ultra opaca e eggshell.

**EN.** Water-based finish for interiors, easy to apply, fast drying, odorless, low-VOC, free from formaldehyde and added plasticizers. Excellent coverage, highly washable and guarantees excellent uniform finish.  
Textures: ultra-matt and eggshell.


**FR.** Peinture à l'eau pour intérieurs, de simple application, à séchage rapide. Inodore, à basse émission de COV, exempte de formaldéhyde et plastifiants ajoutés. Avec excellent pouvoir couvrant, super lavable, MATmotion Extra garantit une finition uniforme.  
Finitions: ultra mate et coquille d'œuf.

**DE.** Hochwertige InnenFarbe auf Wasserbasis für Innenräume, einfach aufzutragen. MATmotion Extra trocknet schnell, ist geruchlos und VOC emissionsarm, frei von Formaldehyd und zugesetzten Weichmachern. Hervorragende Abdeckung, super waschbar, garantiert einheitliches Finish.  
Oberflächen: stumpfmatt und Eierschalen-Finish.

 **Applicazione / Application / Application / Anwendung**  
IT. 2 mani con pennello, rullo in microfibra o in lana, pistola a spruzzo airless.  
EN. 2 layers with brush, wool or microfiber roller, airless spraying gun.  
FR. En 2 couches avec pinceau, rouleau en microfibre ou en laine, pistolet à spray.  
DE. 2 Schichten mit Pinsel, Mikrofaser oder Wollwalze, Airless-Spritzpistole.

 **Diluizione con acqua / Dilution with water / Dilution avec eau / Mit Wasser verdünnen**  
IT. Matt applicato a rullo prima e seconda mano 20%; Eggshell prima mano 10%, strati successivi 0-5%.  
EN. Matt by roller first and second coat at 20%; Eggshell first coat 10%; next coats 0-5%.  
FR. Matt: appliqué avec rouleau, première et seconde couche avec 20%; Eggshell: première couche avec 10%, couches suivantes avec 0-5%.  
DE. Erste und zweite Schicht mit Walze auftragen und mit 20% Wasser verdünnen; Eierschale: erste Schicht 10% verdünnen, folgende Schichten 0-5%.

**m<sup>2</sup> Resa indicativa / Indicative spreading rate / Rendement indicativo / Indikativer Verbrauch**  
IT. Matt 9-12 m<sup>2</sup>/l per singolo strato; Eggshell 9-14 m<sup>2</sup>/l per singolo strato.  
EN. Matt 9-12 m<sup>2</sup>/l per coat; Eggshell 9-14 m<sup>2</sup>/l per coat.  
FR. Matt 9-12 m<sup>2</sup>/l pour chaque couche; Eggshell 9-14 m<sup>2</sup>/l pour chaque couche.  
DE. Matt 9-12 m<sup>2</sup>/l pro Schicht; Eierschale 9-14 m<sup>2</sup>/l pro Schicht.

 **Basi / Bases / Bases / Basen**  
IT. Bianco, base deep, base accent.  
EN. White, base deep, base accent.  
FR. Blanc, base deep, base accent.  
DE. Weiß, deep und accent Basen.

## MATmotion

---



Certificato A+ per le basse emissioni di sostanze volatili nell'aria

*A+ Certified for the low emissions of volatile substances in the air*



Senza formaldeide aggiunta

*Without added formaldehyde*



MATmotion Supreme Matt & Egggy conformi HACCP secondo i requisiti del Reg. CE 852/2004

*MATmotion Supreme Matt & Egggy HACCP compliant with the requirements of Reg. EC 825/2004*

---

Le tonalità di questa cartella hanno valore puramente indicativo.

*The color samples in this color chart should be considered purely indicative.*

Cod. N000115

Edition 2020

freedot

# novacolor™

I colori dell'Architettura

NOVACOLOR Srl

Via Ulisse Aldrovandi 10 - 47122 Forlì (FC) Italy

Tel +39 0543 401840 - Fax +39 0543 414585

info@novacolor.it



Novacolor is committed to reduce the environmental impact by producing friendly materials.

COMPANY WITH  
MANAGEMENT SYSTEM  
CERTIFIED BY DNV GL  
= ISO 9001 =  
= ISO 14001 =



Made in Italy